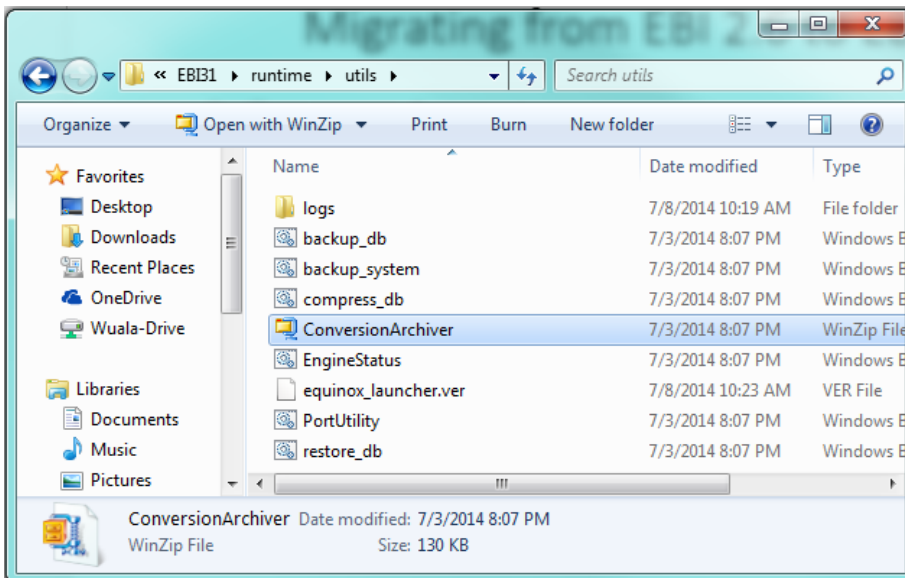


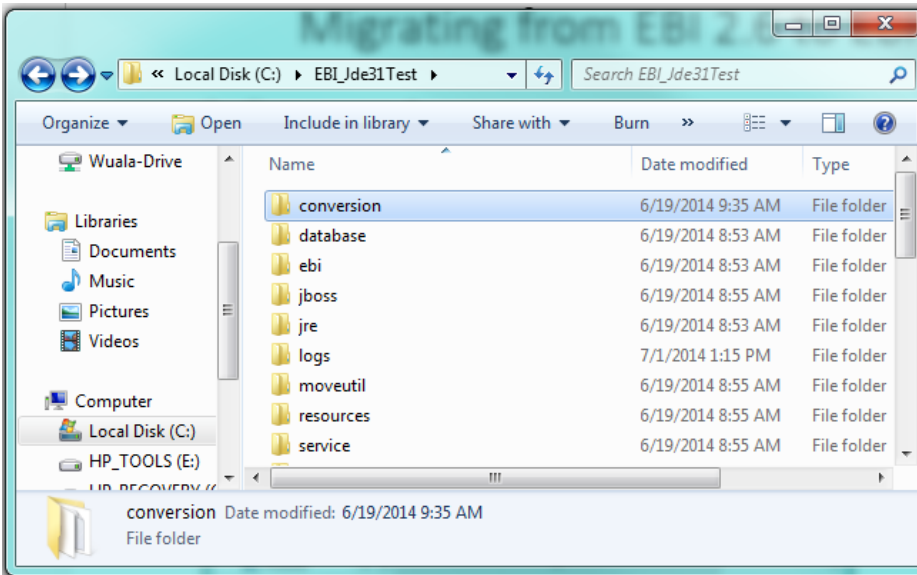
Migrating from EBI 2.6 to EBI 3.1

1 CONVERSION ARCHIVER

The first step to migrating the EBI user's EBI 2.6 environment to EBI 3.1 is the **Conversion Archiver**. This is located in the EBI3 /runtime/utils directory.



The ConversionArchiver.zip file needs to unzip to the root directory of the EBI 2.6 installation.

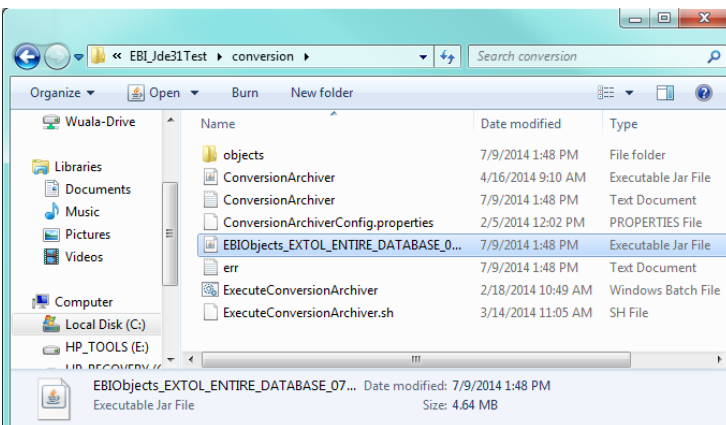


2 EXECUTING THE CONVERSION ARCHIVER

The next step is making sure the EBI 2.6 server is started. Once started, the EBI user wants to open a command window and change the directory to where the conversion folder was just unzipped. From the command line, run the command **ExecuteConversionArchiver "EXTOL_ENTIRE_DATABASE"**.



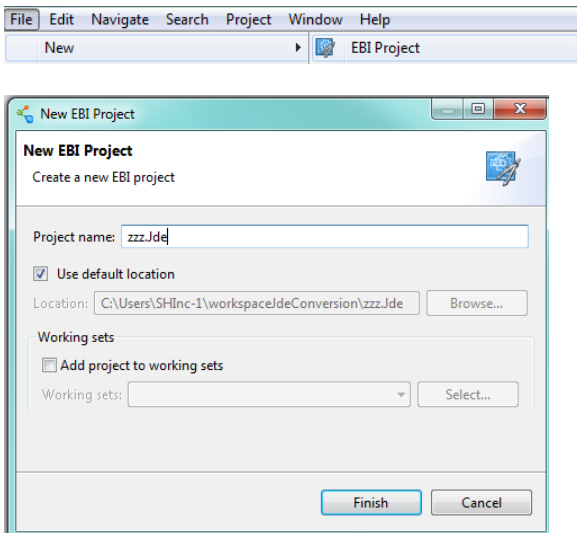
When the command finishes running a .jar file will be created in the conversion folder directory.



3 NEW EBI PROJECT

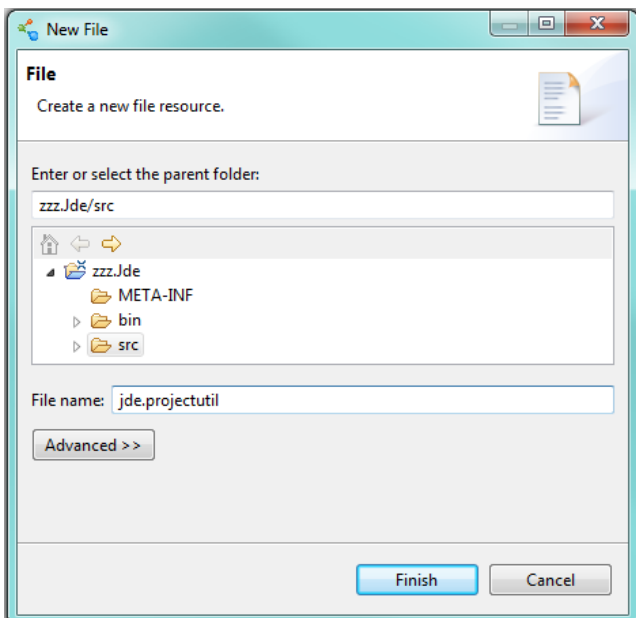
The EBI user will want to create a new EBI 3.1 workspace to bring their EBI 2.6 environment into. Once created they will want to create an EBI Project. A good practice is a zzz prefix for the project containing the projectutil file and Conversion Manager object.

Click **File > New > EBI Project**



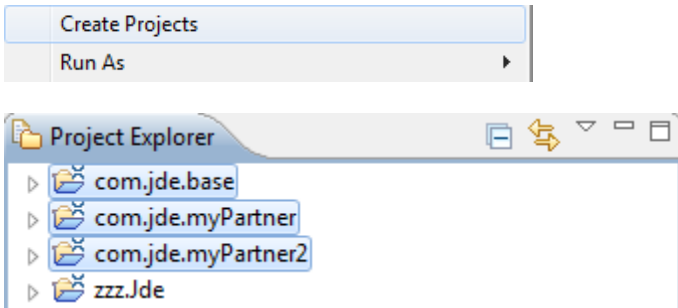
4 CREATE PROJECTUTIL FILE

In the EBI Project, the EBI user will want to create a .projectutil file. In this file is where the EBI user will specify the name of their projects and trading partners like the following example.

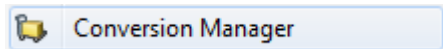


```
*jde.projectutil X
prefix=com.jde.
base
myPartner > base
myPartner2 > base
```

This example will create the following projects in the EBI user’s workspace when the EBI user right clicks the .projectutil file and clicks **Create Projects**.

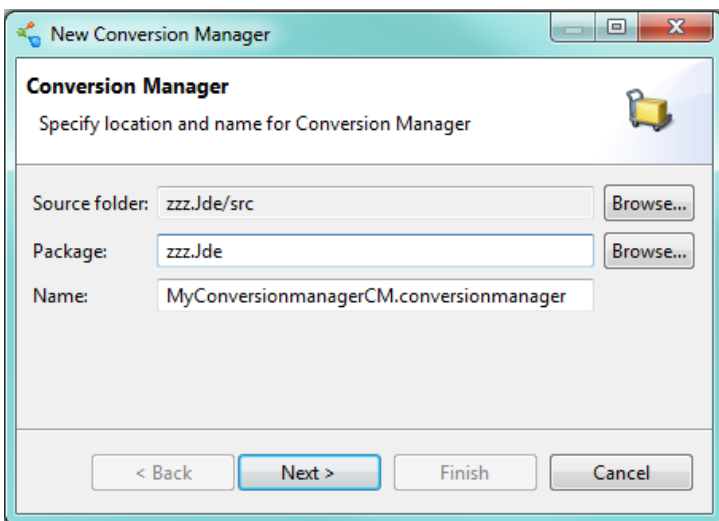


5 CREATING THE CONVERSION MANAGER



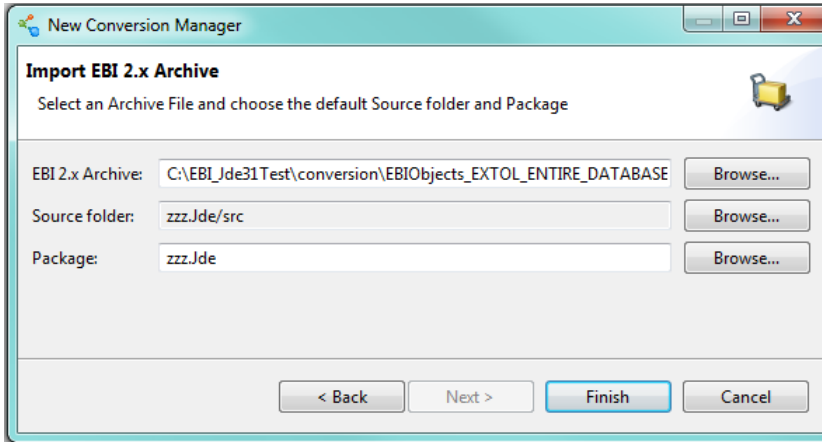
Once the EBI user has their projects created, they can create their Conversion Manager.

Click **File > New > Conversion Manager**



Click **Next**.

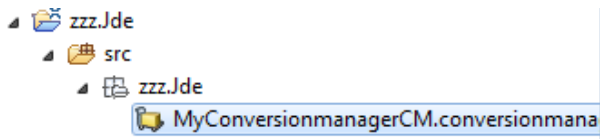
Below the EBI user browses and identifies for the .jar file that was created by the **ExecuteConversionArchiver**, in the conversion folder.



Click **Finish**.

6 THE CONVERSION MANAGER

Once the Conversion Manager is created it will appear in the package of the zzz project as in the following example.



From here the EBI user can see all the objects that were brought in with the Conversion Manager. It lists all the info for the objects and what they will be named in EBI 3.1.

This is where the EBI user wants to sort out what objects can be placed in the base and used by multiple trading partners. Also which objects are trading partner specific and placed in their own EBI Projects.

MyConversionManagerCM.conversionmanager

EBI 2 Conversion Manager Editor

Conversion Plan Start Conversion Rename Change Destination Reload Jar Refresh Editor Com

Filter Options

Selection Count: 0 Error Count: 0 Convert Count: 0 Show Errors Select Dependencies Select All

EBI 2 Name	Object Type	Used By	Depends On	Project	Package	New Name	Action
user.home	Global Variable			zzz.Jde	zzz.Jde	GlobalVariables.UserHome	Skip
path.separator	Global Variable			zzz.Jde	zzz.Jde	GlobalVariables.PathSeparator	Skip
localhost	Global Variable			zzz.Jde	zzz.Jde	GlobalVariables.Localhost	Skip
java.home	Global Variable	2		zzz.Jde	zzz.Jde	GlobalVariables.JavaHome	Skip
formulas.path.url	Global Variable		1	zzz.Jde	zzz.Jde	GlobalVariables.FormulasPathUrl	Skip
formulas.path	Global Variable		2	zzz.Jde	zzz.Jde	GlobalVariables.FormulasPath	Skip
formulas.ebjar.url	Global Variable		1	zzz.Jde	zzz.Jde	GlobalVariables.FormulasEbjarUrl	Skip
StandardErrorProcess	Business Proc...	21		zzz.Jde	zzz.Jde	StandardErrorProcess	Skip
Split Basic XML	Business Proc...			zzz.Jde	zzz.Jde	SplitBasicXml	Skip
Simple Date Purge	Business Proc...			zzz.Jde	zzz.Jde	SimpleDatePurge	Skip
Retrieve Transformation Batch	Business Proc...			zzz.Jde	zzz.Jde	RetrieveTransformationBatch	Skip
Report - EDI Late Acknowledgements	Business Proc...			zzz.Jde	zzz.Jde	ReportEdiLateAcknowledgements	Skip
Process Segments in a Message	Business Proc...			zzz.Jde	zzz.Jde	ProcessSegmentsInAMessage	Skip
Portal - Send	Business Proc...			zzz.Jde	zzz.Jde	PortalSend	Skip
Portal - Receive	Business Proc...			zzz.Jde	zzz.Jde	PortalReceive	Skip
Oracle11gExtolDS	Data Source		1	zzz.Jde	zzz.Jde	Oracle11gExtolDS	Skip
NormalizedInputNENormalizedValue	Action	9		zzz.Jde	zzz.Jde	NormalizedInputNENormalizedValue	Skip
NormalizedInputEQNormalizedValue	Action	16		zzz.Jde	zzz.Jde	NormalizedInputEQNormalizedValue	Skip
LOG_OF_CONNECTION	Next Number	1		zzz.Jde	zzz.Jde	NextNumberRegistryFile.LogOfConnection	Skip
JdeEdiExtolErrorsTo	Global Variable			zzz.Jde	zzz.Jde	GlobalVariables.JdeEdiExtolErrorsTo	Skip
JdeEdiEmailFrom	Global Variable			zzz.Jde	zzz.Jde	GlobalVariables.JdeEdiEmailFrom	Skip
JDEEnvironment	Global Variable			zzz.Jde	zzz.Jde	GlobalVariables.JDEEnvironment	Skip
JAVA_HOME	Global Variable		1	zzz.Jde	zzz.Jde	GlobalVariables.JavaHome	Skip
JAVA_EXE	Global Variable		2	zzz.Jde	zzz.Jde	GlobalVariables.JavaExe	Skip
Icn940CNG	Control Numb...	1		zzz.Jde	zzz.Jde	ControlNumberGenerators.Icn940CNG	Skip

For example, objects going into base project would be Actions and EDI Schemas because they can be used by multiple trading partners.

BaseJdePyF4706SelectAllFields	Action	4	1	com.jde.base	com.jde.base.actions
BaseJdePyF47047SelectSoqsSum	Action	1	1	com.jde.base	com.jde.base.actions
BaseJdePyF4211SelectSdssoqs	Action	1	1	com.jde.base	com.jde.base.actions
BaseJdePyF4211SelectSdshanSdan8	Action	1	1	com.jde.base	com.jde.base.actions
BaseJdePyF4201SelectAn8KcooDctoMcuCo	Action	1	1	com.jde.base	com.jde.base.actions
BaseJdePyF4104SelectIvitm	Action	1	1	com.jde.base	com.jde.base.actions
BaseJdePyF4104SelectIvitm	Action	3	1	com.jde.base	com.jde.base.actions

For objects going to myPartner project, EBI users would want objects such as Rulesets and Routes.

BaseEdi4010Inbound810EP	Inbound Route	1	3	com.jde.myPartner	com.jde.myPartner.routes
BaseEdi4010Inbound860EP	Inbound Route	1	3	com.jde.myPartner	com.jde.myPartner.routes
BaseEdi4010InboundEP	Inbound Route	8	2	com.jde.myPartner	com.jde.myPartner.routes
BaseEdi4010Inbound823EP	Inbound Route	1	3	com.jde.myPartner	com.jde.myPartner.routes
BaseEdi4010Inbound867EP	Inbound Route	1	3	com.jde.myPartner	com.jde.myPartner.routes
BaseEdi4010Inbound945EP	Inbound Route	1	3	com.jde.myPartner	com.jde.myPartner.routes
BaseEdi4010Inbound856EP	Inbound Route	1	3	com.jde.myPartner	com.jde.myPartner.routes
BaseEdi4010Inbound850EP	Inbound Route	1	3	com.jde.myPartner	com.jde.myPartner.routes
BaseEdi4010Inbound820EP	Inbound Route	1	3	com.jde.myPartner	com.jde.myPartner.routes

When complete, click **Start Conversion** and all of the objects will be split up into their EBI projects and packages that the EBI user specified.