



# PROMOTING PROJECTS TO PROMOTE/MIGRATE EXTOL PROJECTS FROM STUDIO TO SERVER

In the steps below we will review the process to promote EXTOL projects from the EBI 3 Studio to the EBI 3 Server.

These steps would be ideal once the EBI user has tested and validated the EXTOL Projects/Packages/Objects in EXTOL Studio. Below are the testing scenarios for inbound/outbound EDI processes in the Local Studio Console:

- [Test EXTOL Inbound 850->Database Project in the Local Server](#)
- [Test EXTOL Outbound Database->850 Project in the Local Server](#)

**Note:**It is advisable to use global variables in each of the objects where there a file location is referenced. The locations of some objects might not exist in the exact spots on the EXTOL Server. An ideal situation would be where the EXTOL Studio is on a Windows machine while the EXTOL Server is on a Linux based machine.

## Tag Projects for Production

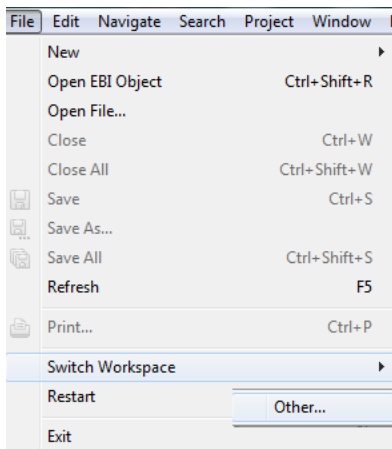
Before EXTOL Business Integrator 3 Projects are promoted to the Production Server, the projects will need to be tagged. EBI 3 users can review [Step by Step Instructions to Create Tags for Projects in SVN Repository](#)

## 1 CREATE A PRODUCTION WORKSPACE

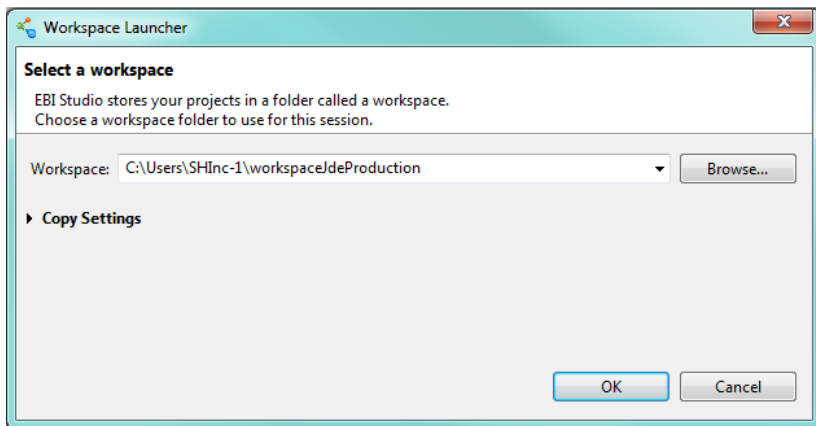
---

The best practice for this would be to create a new workspace for the Production projects.

**File > Switch Workspace > Other**



A dialog box will appear that will allow the directory and name of the workspace to be changed.

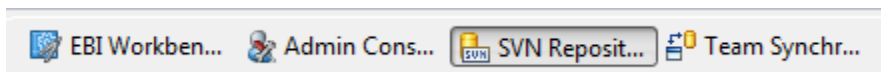


Once created the EBI user will have an empty workspace. This is where creating tags comes in handy because the EBI user can create a tag for a specific time when projects were Production ready.

## 2 CHECK OUT FROM THE SVN REPOSITORY

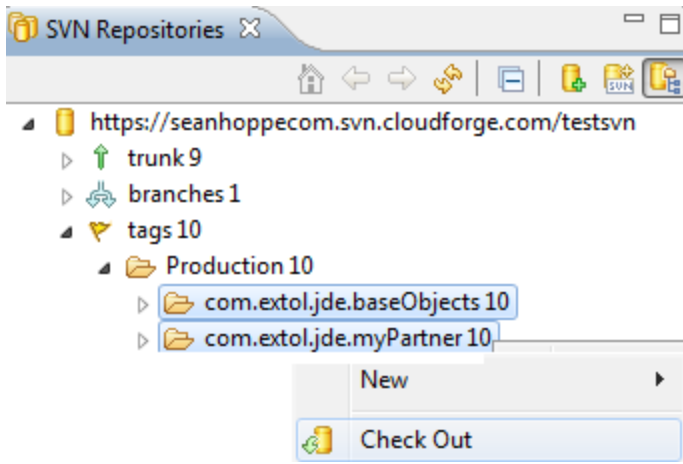
---

After the new workspace has been created, the EBI user will want to click on the **SVN Repository** section at the top right of the EBI studio.

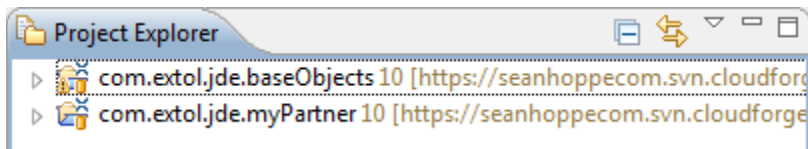
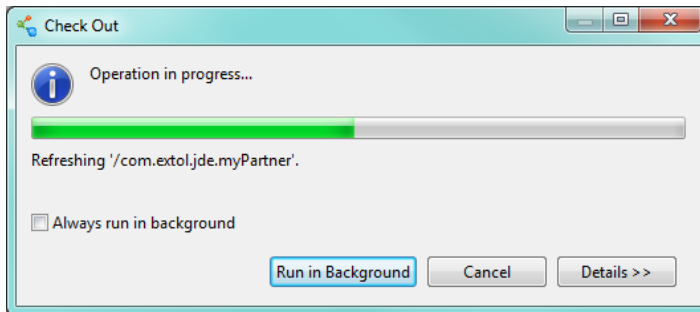


Next the EBI user will right-click on the project they would like to check out.

Click on **Check Out**



A progress box will appear and then the EBI user's workspace will be populated with the Production ready projects.



### 3 CREATING THE PRODUCTION SERVER

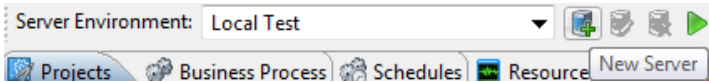
---

**NOTE:** This step is only required if EBI 3 user has not identified the **Production Server** in EBI 3 Studio.

First the EBI user will need to click on **Admin Console** at the top right of the EBI Studio.

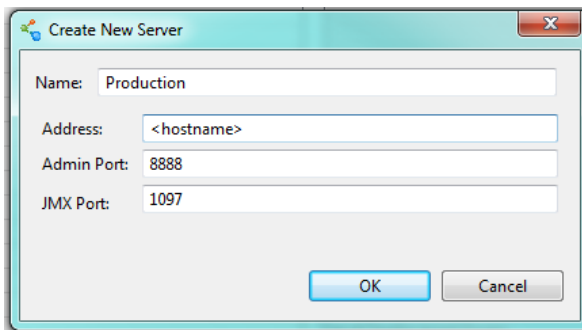


Next the EBI user will click on the **New Server** button at the top next to the Server Environment dropdown.



A **Create New Server** box will appear. This is where the EBI user enters the name and Server info.

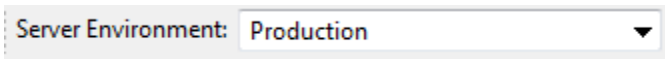
Click **OK** when finished.



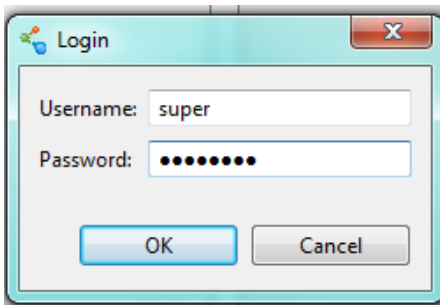
### 4 CONNECTING TO THE PRODUCTION SERVER

---

Once the EBI Server is created the EBI user can select the Production server in the Server Environment dropdown.

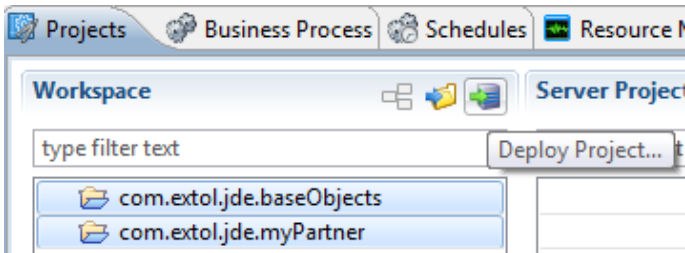


A server login box will appear when the Production server is selected. Enter the username and password and click **OK**.

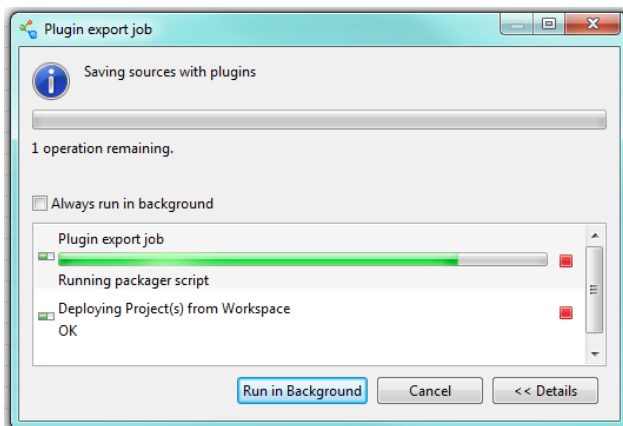


## 5 DEPLOYING PROJECTS ON PRODUCTION

When connected to the Production server, the EBI user can deploy their projects up on the server by highlighting the projects and clicking the **Deploy Project** near the top.

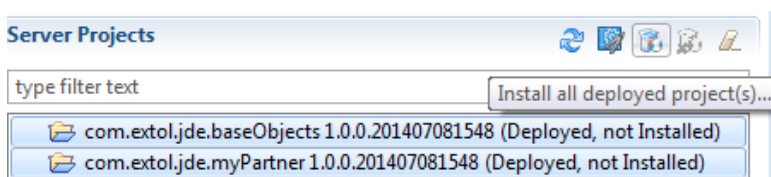


A progress box will appear next.

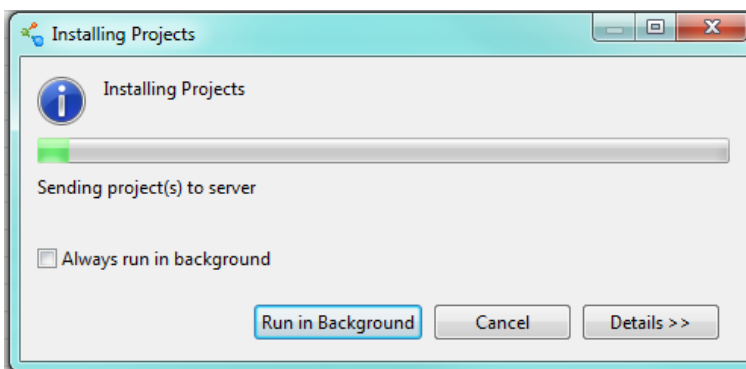


Once deployed the projects will appear in the Server Projects section as not installed.

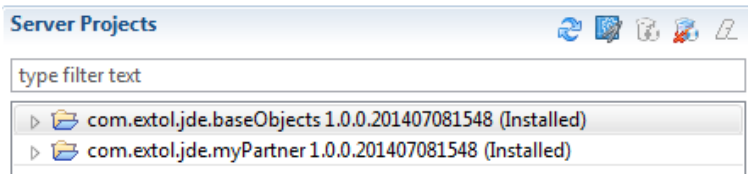
To install them click the **Install all deployed project(s)** button at the top.



An Installing Projects box will appear.



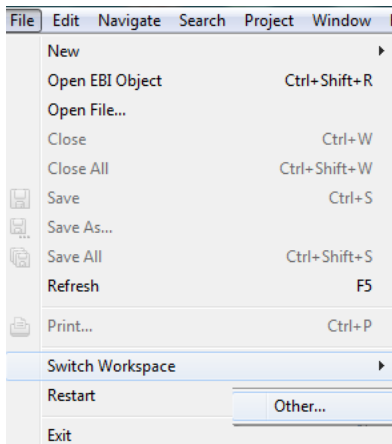
Once installed the Server Project section will look like this.



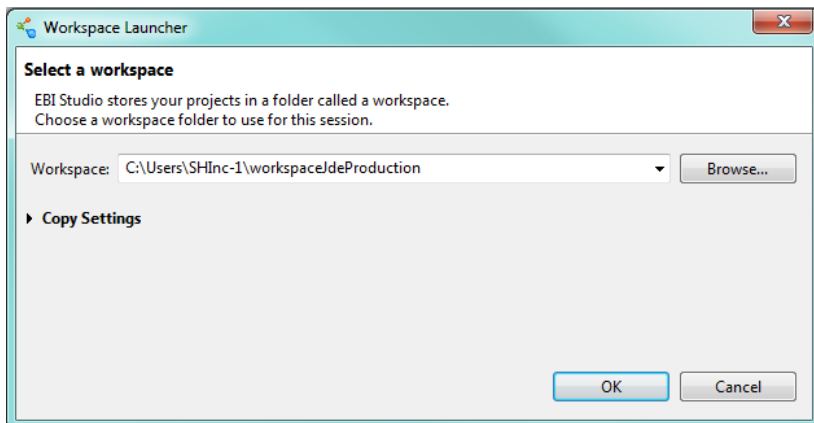
## 6 CREATE A PRODUCTION WORKSPACE

The best practice for this would be to create a new workspace for the Production projects.

**File > Switch Workspace > Other**



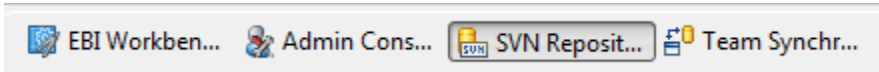
A dialog box will appear that will allow the directory and name of the workspace to be changed.



Once created the EBI user will have an empty workspace. This is where creating tags comes in handy because the EBI user can create a tag for a specific time when projects were Production ready.

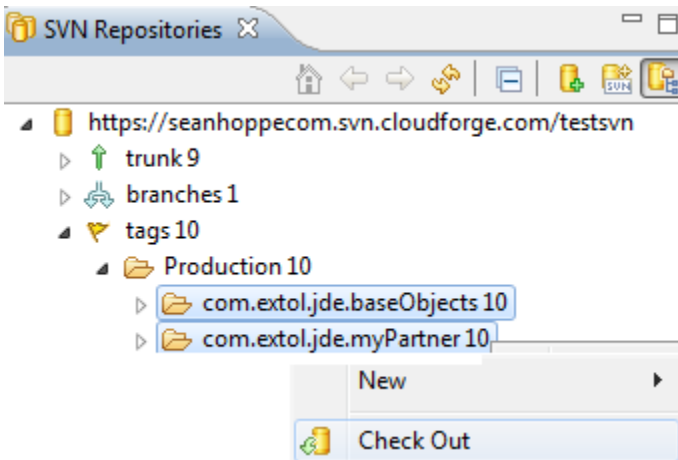
## 7 CHECK OUT FROM THE SVN REPOSITORY

After the new workspace has been created, the EBI user will want to click on the **SVN Repository** section at the top right of the EBI studio.

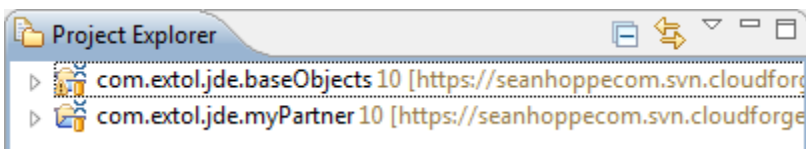
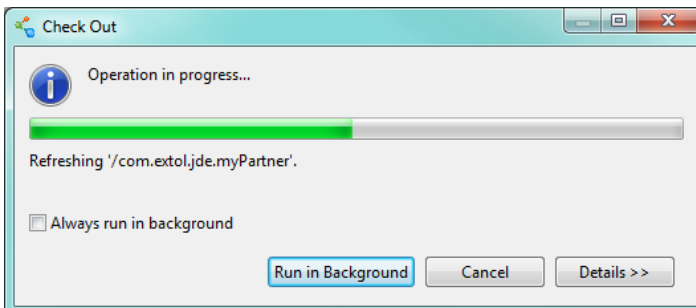


Next the EBI user will right-click on the project they would like to check out.

Click on **Check Out**



A progress box will appear and then the EBI user's workspace will be populated with the Production ready projects.



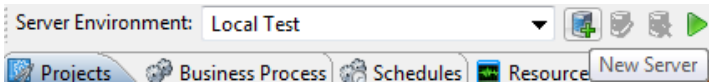
## 8 CREATING THE PRODUCTION SERVER

---

First the EBI user will need to click on **Admin Console** at the top right of the EBI Studio.

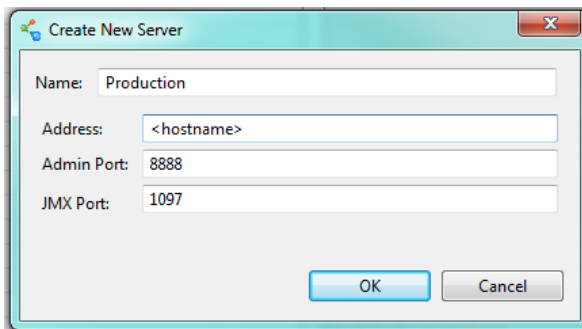


Next the EBI user will click on the **New Server** button at the top next to the Server Environment dropdown.



A **Create New Server** box will appear. This is where the EBI user enters the name and Server info.

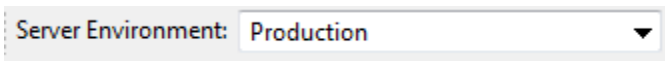
Click **OK** when finished.



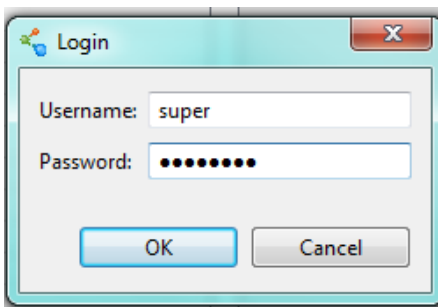
## 9 CONNECTING TO THE PRODUCTION SERVER

---

Once the EBI Server is created the EBI user can select the Production server in the Server Environment dropdown.



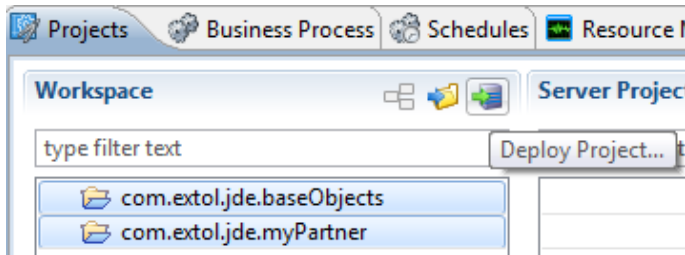
A server login box will appear when the Production server is selected. Enter the username and password and click **OK**.



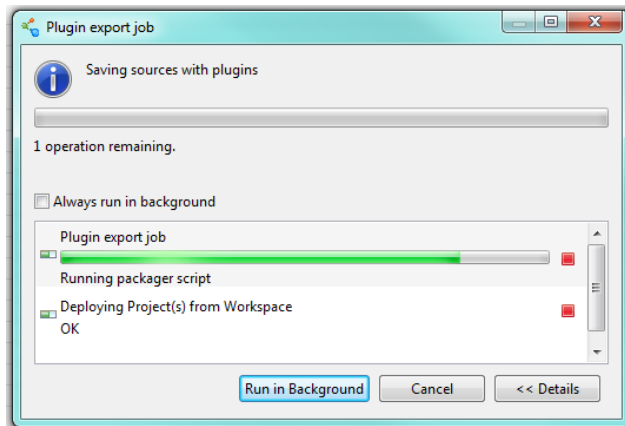


# 10 DEPLOYING PROJECTS ON PRODUCTION

When connected to the Production server, the EBI user can deploy their projects up on the server by highlighting the projects and clicking the **Deploy Project** near the top.

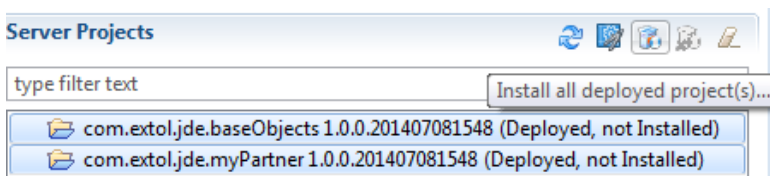


A progress box will appear next.

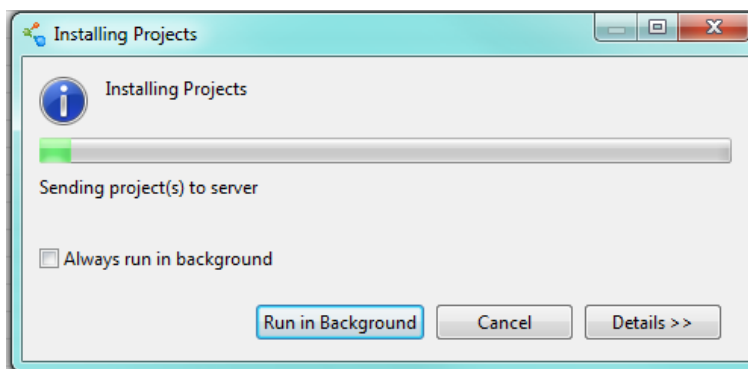


Once deployed the projects will appear in the Server Projects section as not installed.

To install them click the **Install all deployed project(s)** button at the top.



An Installing Projects box will appear.



Once installed the Server Project section will look like this.

