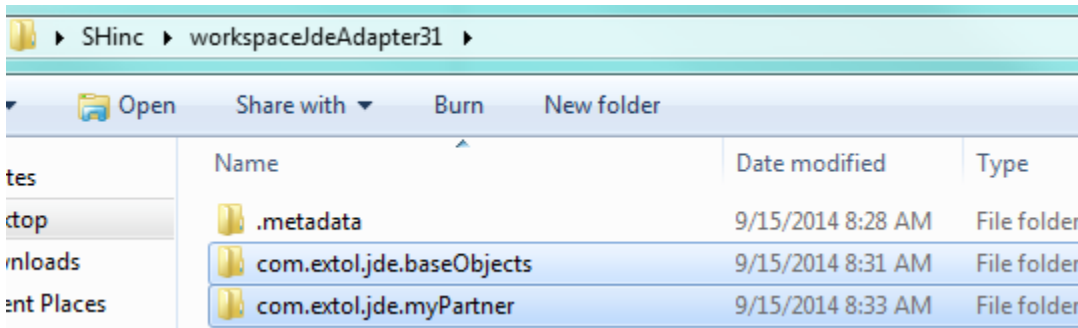


Move EBI 3 Projects Between Systems when SVN is Unavailable

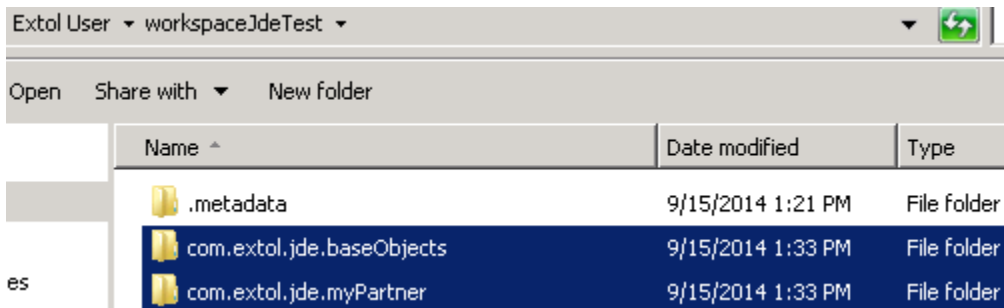
1 COPYING THE PROJECTS

The first step the EBI user needs to take is copying the projects from the system's workspace.



2 PASTING INTO NEW WORKSPACE FOLDER

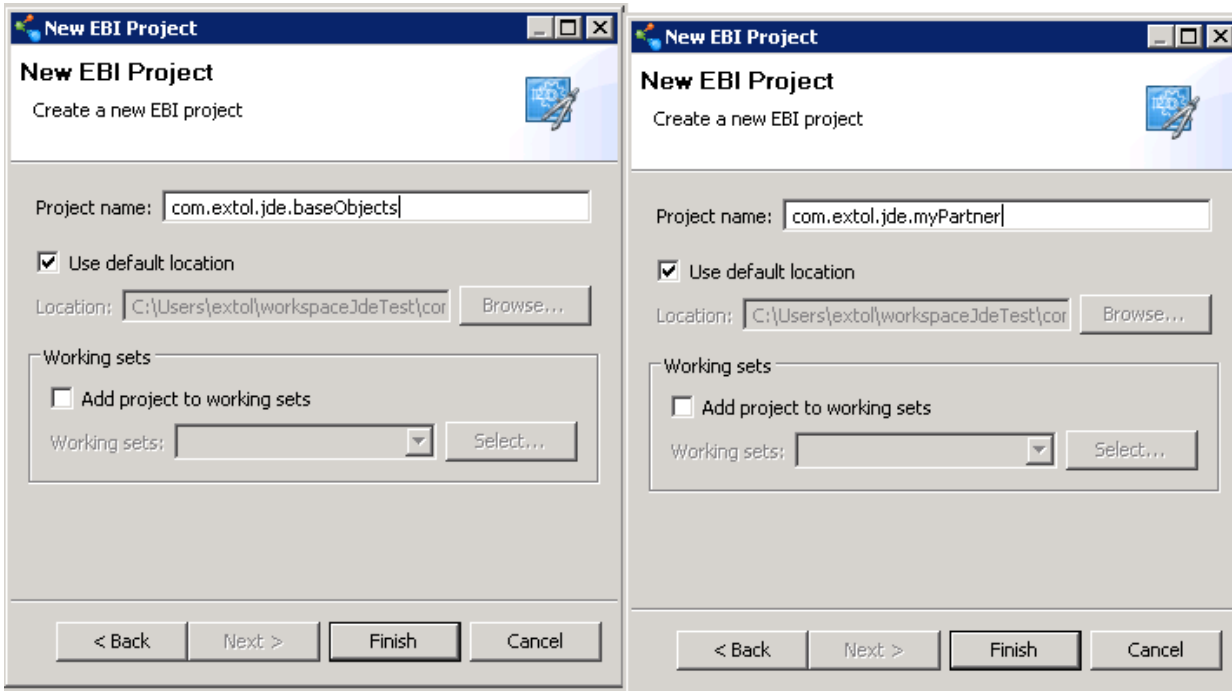
Once the projects are copied, the EBI user will need to paste the projects into the destination machine's workspace.



3 CREATE PROJECTS IN NEW ENVIRONMENT

The next step the EBI user needs to take is creating projects with the same exact name in the EBI 3 Studio Workspace on the target machine.

File > New > EBI Project



Once created, the EBI 3 Studio will start building each project from the folder the EBI user pasted in the workspace. The only thing the EBI user may need to do is **update the MANIFEST.MF** to share the projects with each other again.

