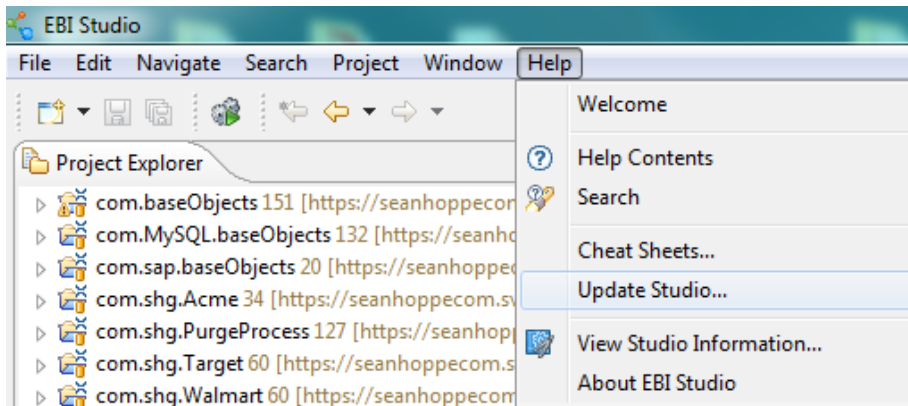


Updating EBI 3 Studio

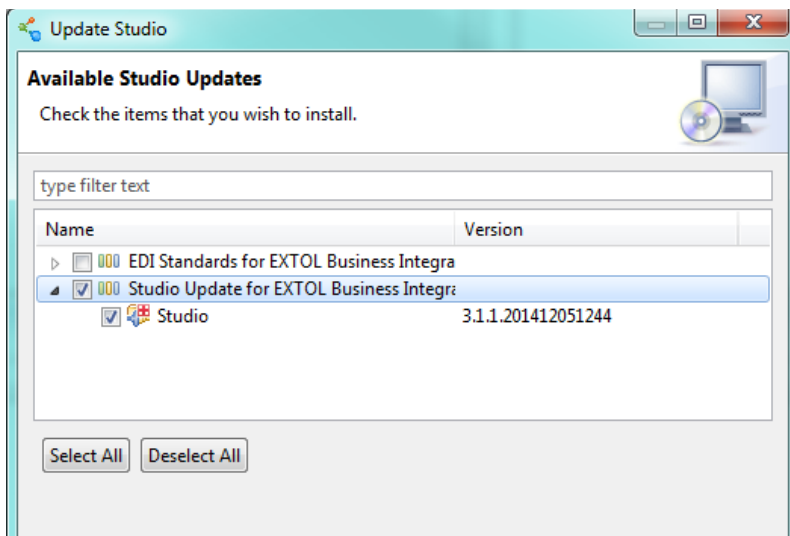
1 NAVIGATE TO HELP MENU

First the EBI user will need to select **Help > Update Studio** from the EBI 3 Workbench.



2 CHECK FOR AVAILABLE STUDIO UPDATES

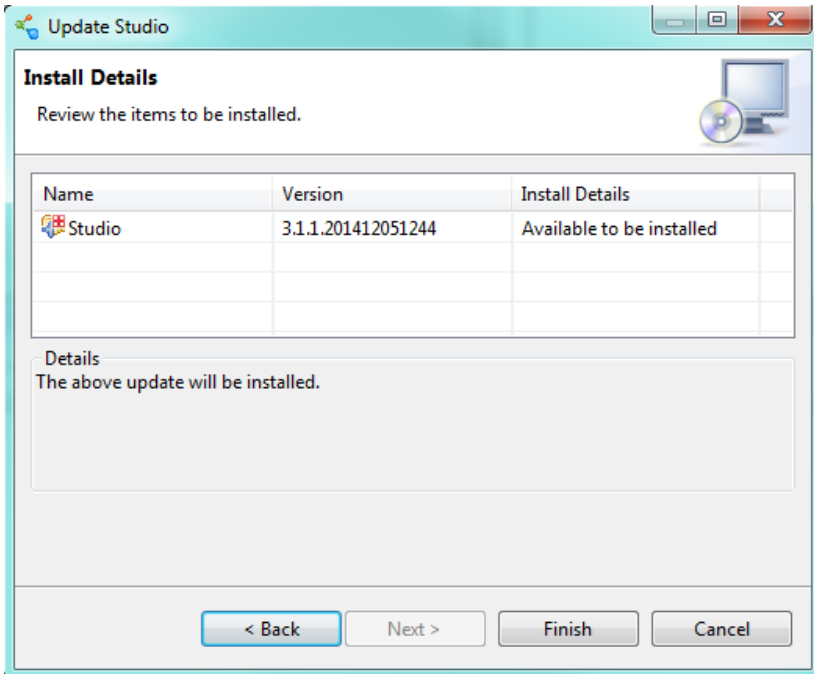
The following screen will appear.



Select the box next to **Studio Update for EXTOL Business Integrator 3**. If the arrow is clicked on it will show the version of the update as well. Hit **Next**.

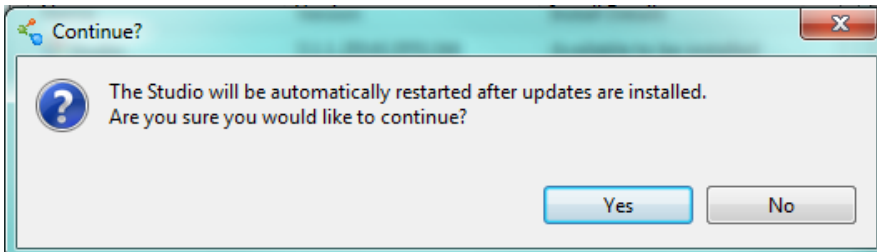
3 REVIEW UPDATE INSTALL

The next screen will show what is going to be installed with the update. Once it has been reviewed hit **Finish**.



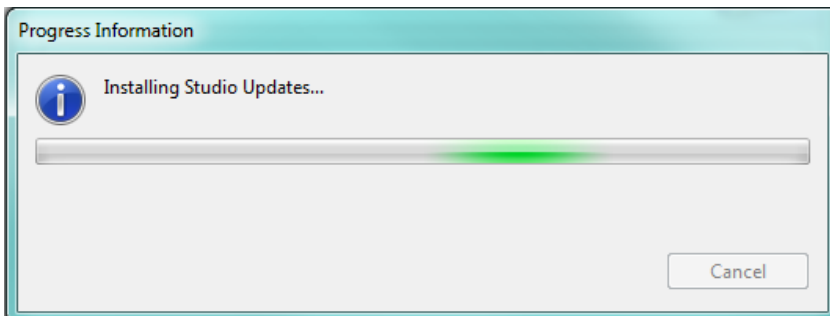
4 CONTINUE

A box will appear. Select **Yes**.



5 INSTALLING UPDATES

A progress bar will appear. This will take time to install depending on the size of the update.



6 WORKSPACE RESTARTED

Once the update has finished installing, the workspace will be restarted. Hit **OK**.

