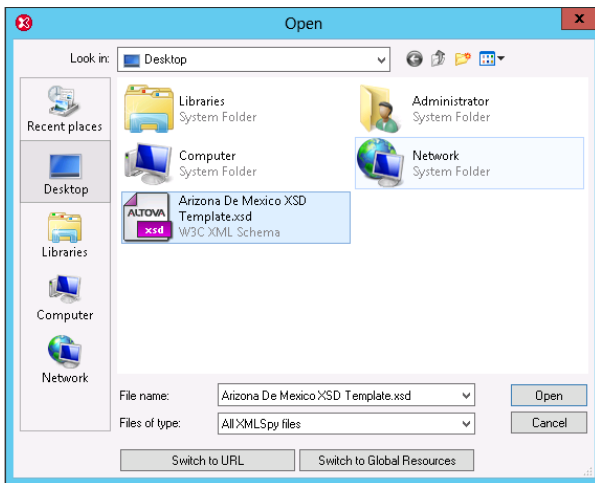


Adding an Attribute to an .XSD File

1 IDENTIFY .XSD FILE

First the user will need to open **Altova XMLSpy**.

Next the user will need to select **File > Open** and select the .XSD file they wish to update to add an attribute.

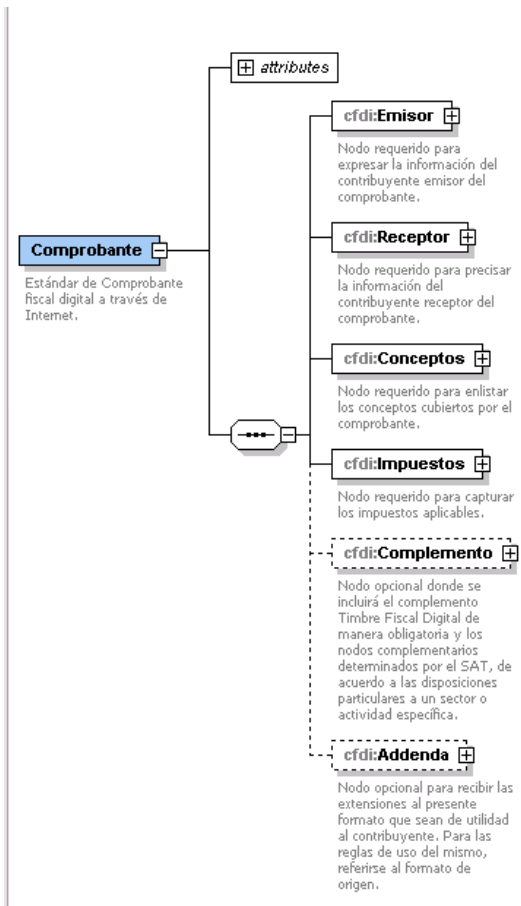


2 EXPAND XSD FILE TREE

The user will then click on the **element** button, which has a blue tree symbol in it.

| | |
|-------------|------------------------------|
| element | Comprobante |
| complexType | t_Ubicacion |
| complexType | t_UbicacionFiscal |
| simpleType | t_RFC |
| simpleType | t_Importe |
| complexType | t_InformacionAduanera |

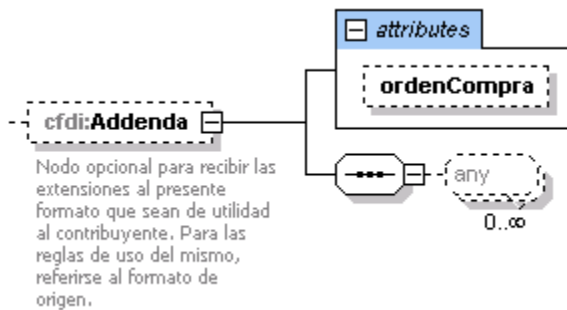
This will expand the XML elements.



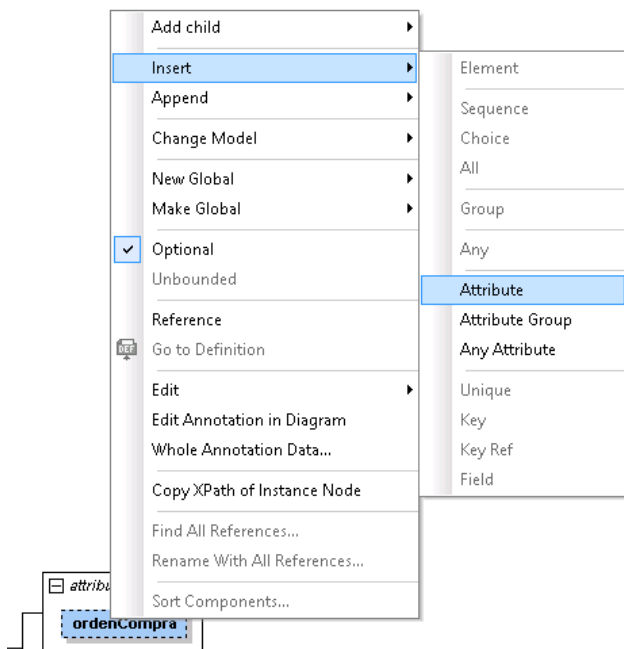
3 IDENTIFY XSD LOCATION OF NEW ATTRIBUTE

In this example, the user will be adding an attribute into the **XML element cfdi:Addenda**.

Click on the plus sign symbol next to that **XML element**. Then click on the plus sign next to **attributes**.



The user wants to add an attribute for **ordenCompra2**. To do this right-click inside the attribute and select **Insert > Attribute**.



4 UPDATE XSD ATTRIBUTE DETAILS

Once inserted name the attribute and edit the **Details** for that attribute. In this example, the user is just copying the same details as **ordenCompra**.

The image shows two panels from an XSD editor. The top panel, titled 'Details', contains the following fields:

| | |
|-----------|--------------------------|
| name | ordenCompra2 |
| isRef | <input type="checkbox"/> |
| type | xs:string |
| derivedBy | restriction |
| use | optional |
| default | |
| fixed | |
| form | |
| id | |

Below the 'Details' panel is a 'SimpleType' tab. The bottom panel, titled 'Facets', contains the following fields:

| | | |
|---------|----------|--------------------------|
| length | | <input type="checkbox"/> |
| minLen | 1 | <input type="checkbox"/> |
| maxLen | | <input type="checkbox"/> |
| whiteSp | collapse | <input type="checkbox"/> |

Once complete, save the .xsd file and it is ready to be used with the new attribute.