

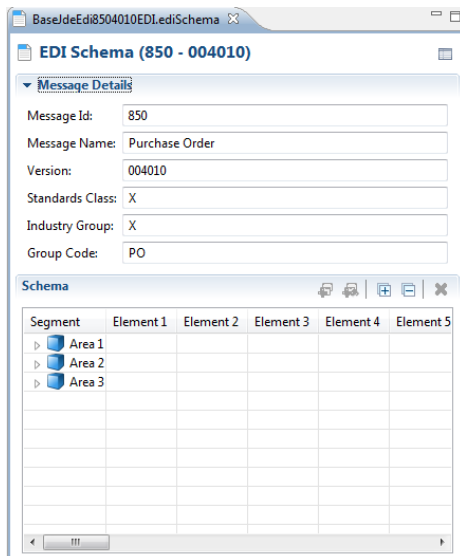


EBI 3.1 Inbound EDI Process

1 SOURCE SCHEMA

For this example we will be using an 850 EDI Schema. The x12 will be used as the source schema in our Ruleset.

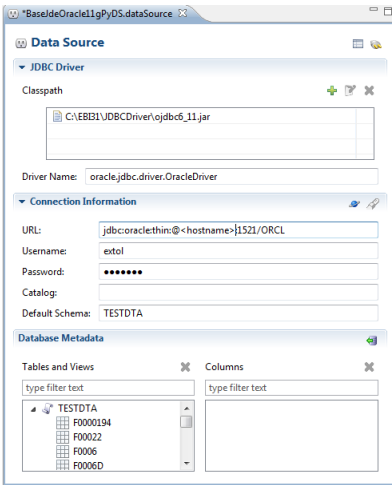
File > New > EDI Schema



2 DATA SOURCE

This object is what will connect to your Data Source using a JDBC Driver and the information to connect to the Database.

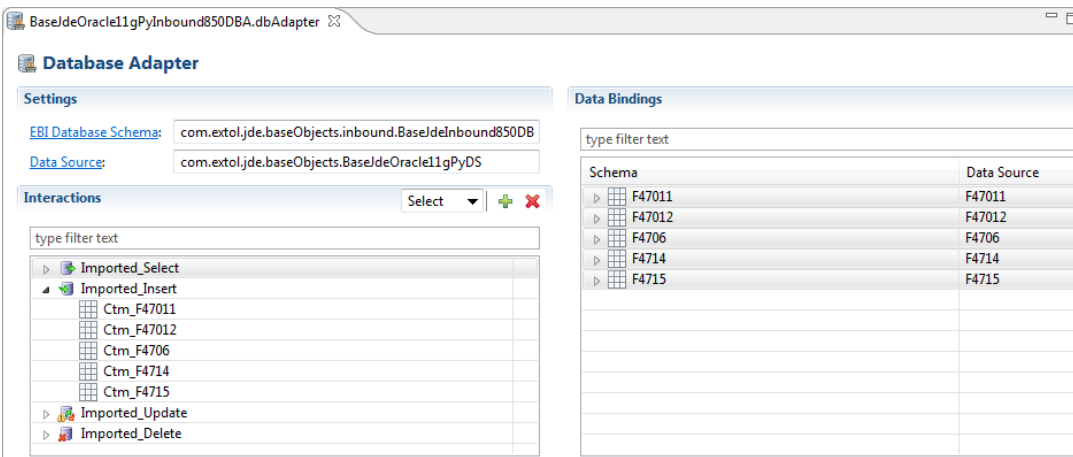
File > New > Data Source



3 DATABASE ADAPTER BaseIdeOracle11gPyInbound850DBA.dbAdapter

This object allows you to insert data into the Database you are using.

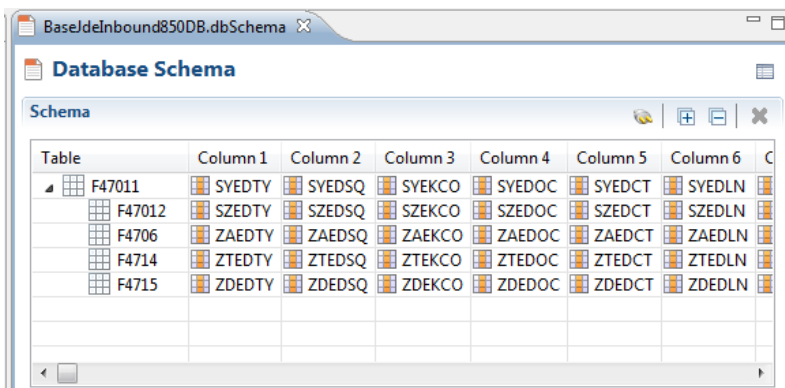
File > New > Database Adapter



4 TARGET SCHEMA BaseJdeInbound850DB.dbSchema

For this example we will be using a Database Schema. The Database will be used as the target schema in our Ruleset.

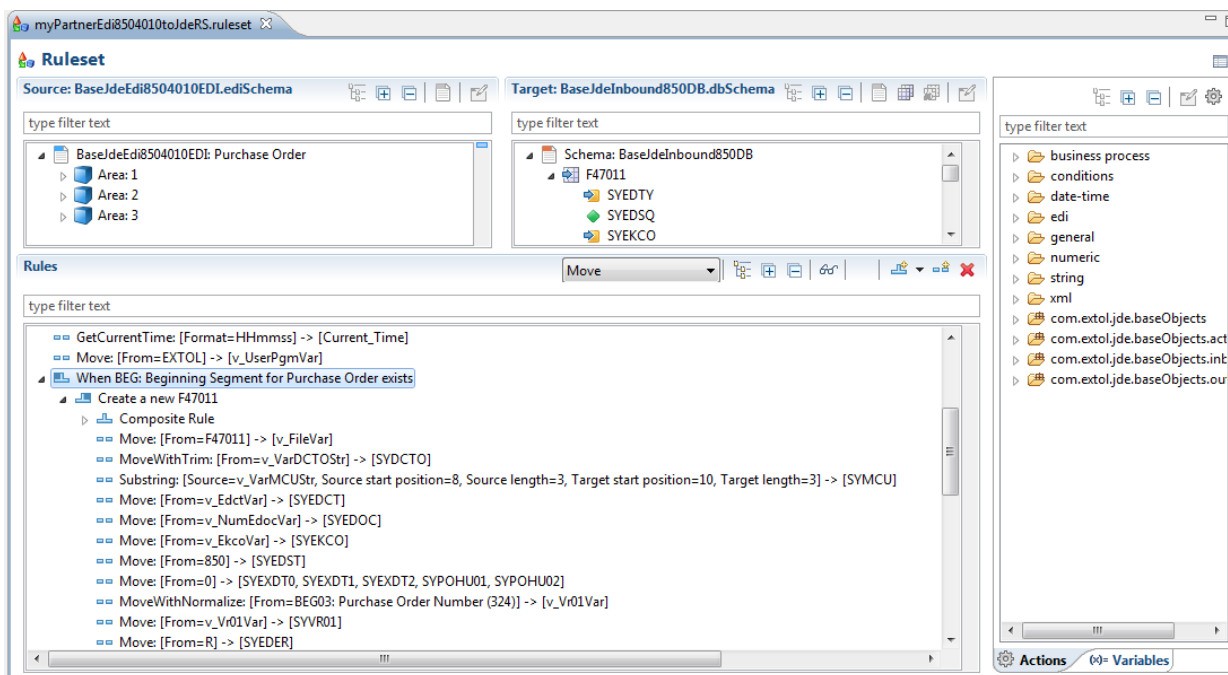
File > New > Database Schema



5 RULESET myPartnerEdi8504010toJdeRS.ruleset

Once both schemas are created we can move on to our Ruleset creation. This Ruleset will bring in an EDI document and transform it over to a Database.

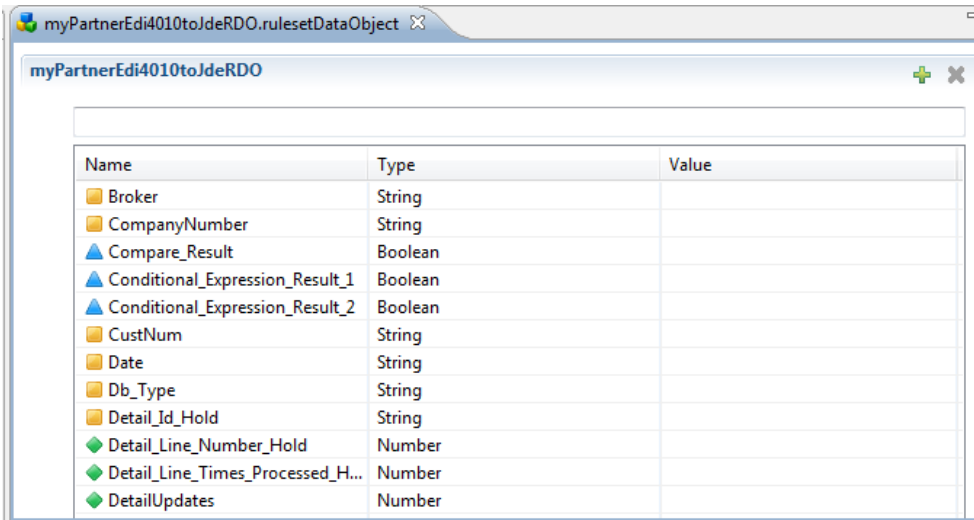
File > New >
Ruleset



5.1 RULESET DATA OBJECTS myPartnerEdi4010toJdeRDO.rulesetDataObject

Ruleset Data Object (RDO) is to define variables that are utilized by one or more EBI Rulesets.

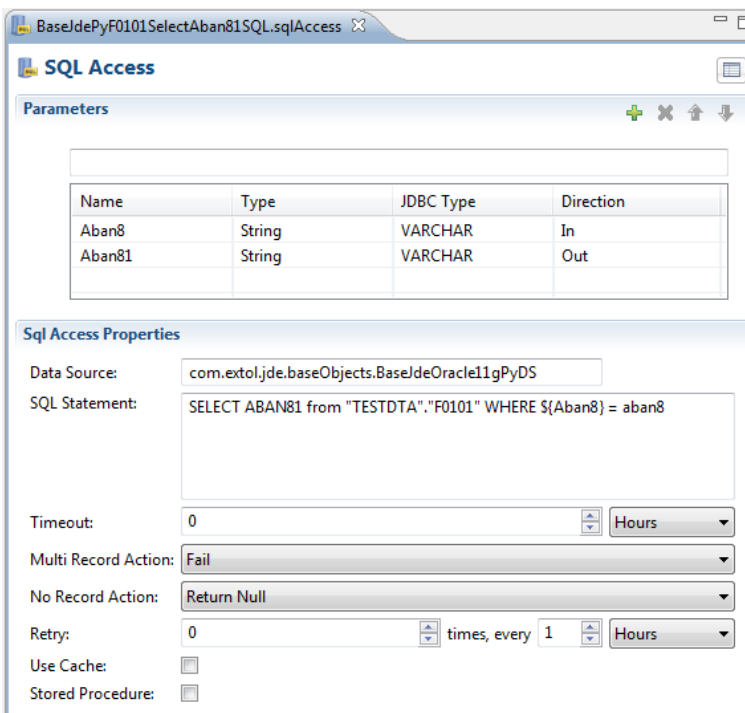
File > New > Ruleset Data Object



5.2 SQL ACCESS BaseJdePyF0111SelectWwan8SQL.sqlAccess

These are used in a Ruleset to go out to other Database tables with certain input values and return back specific fields. This example goes out to the F0101 table with ABAN8 and returns ABAN81.

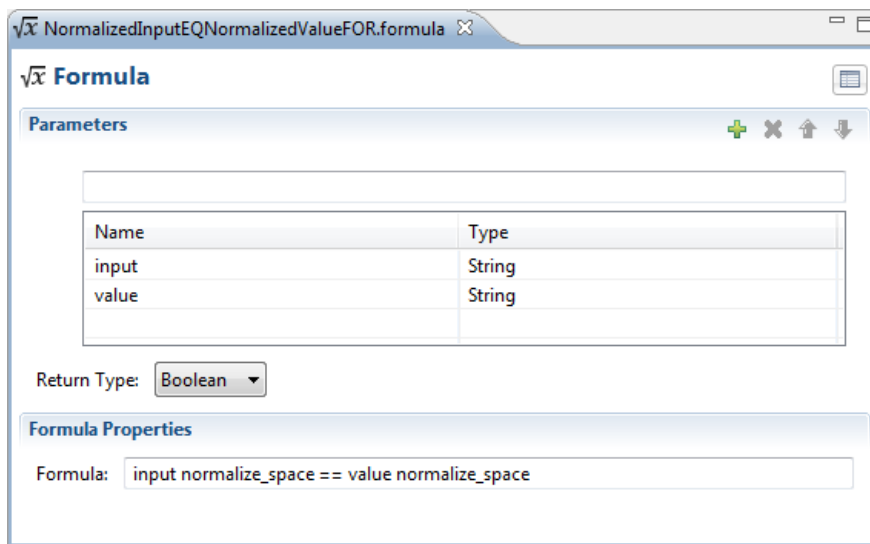
File > New > SQL Access



5.3 FORMULAS NormalizedInputEQNormalizedValueFOR.formula

These are used in a Ruleset to set conditions on composite rules or simple rules. This example sees if a certain value equals another value.

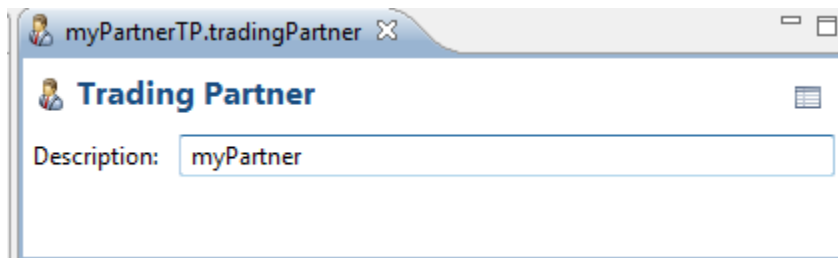
File > New > Formulas



6 TRADING PARTNER myPartnerTP.tradingPartner

This object acts as a pointer to help users indicate who their trading partners are in EBI.

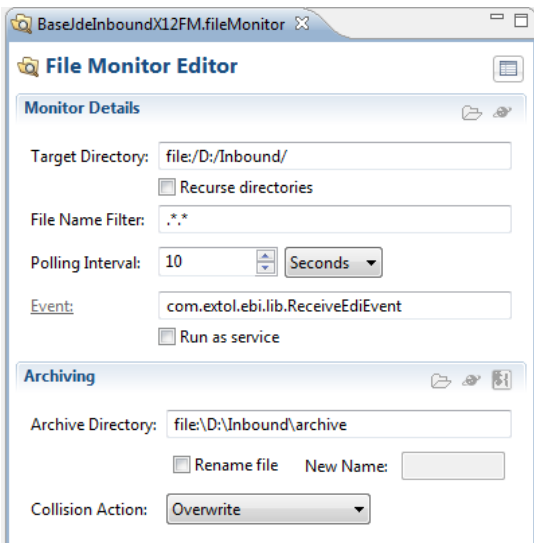
File > New > Trading Partner



7 FILE MONITOR BaseJdeInboundX12FM.fileMonitor

The File Monitor object will monitor for inbound EDI data and archive it. After the File Monitor picks up the EDI and archive, the EXTOL Event will be called to launch the correct Business Process.

File > New > File Monitor

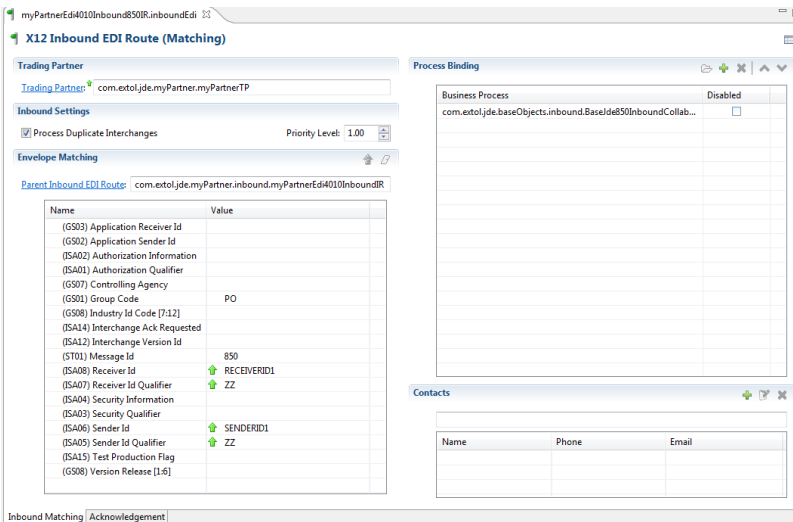


8 INBOUND EDI ROUTE myPartnerEdi4010Inbound850IR.inboundEdi

We use the EDI Inbound Route Object to interrogate the x12 data. In our example the x12 data is picked-up and processed by the File Monitor. The Inbound EDI Route will launch the correct Business Process associated with the Trading Partner EDI envelope information.

Note: In most cases there are 2 Inbound EDI routes. One EDI Route for the ISA level information and another EDI Route for the message level.

File > New > Inbound EDI Route



The Business Process is what performs tasks on the data, specifically the transformation of the data. In this example we have a Ruleset and Database Adapter tasks to translate and insert the data into the database.

File > New > Business Process

